

Santiniketan Experiment















Nandalal Bose



Nandalal Bose
Bichitra studio at jorasanko house



Bodhisattva Padmapani,
wall painting in Cave 1,
Ajanta





Nandalal Bose - copy of Bagh mural

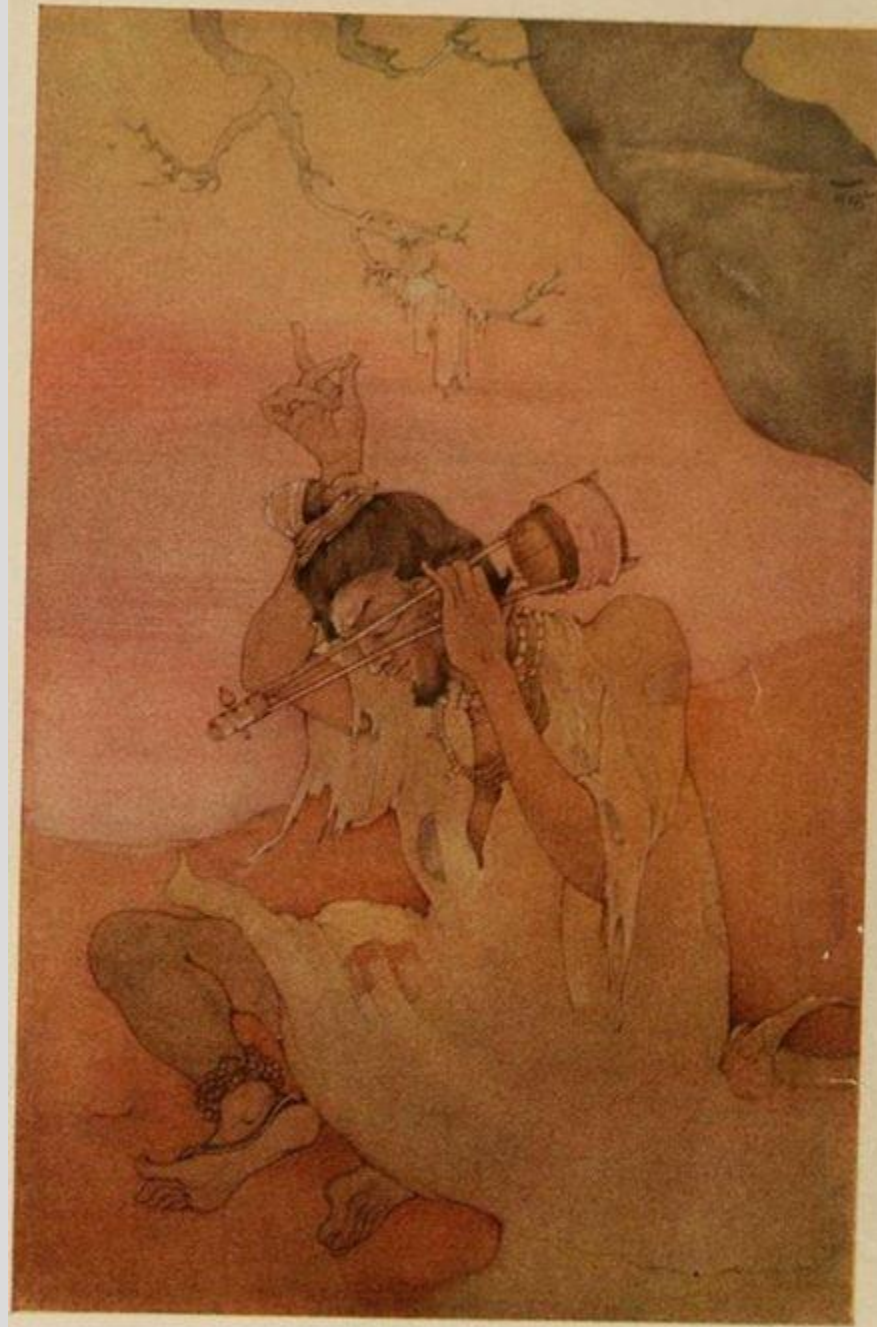
Gitanjali and Fruit-Gathering

By Rabindranath Tagore

With Illustrations by Nandalal Bose,
Surendranath Kar, Abanindranath Tagore
and Nobendranath Tagore

Published by The Macmillan & Co., New York

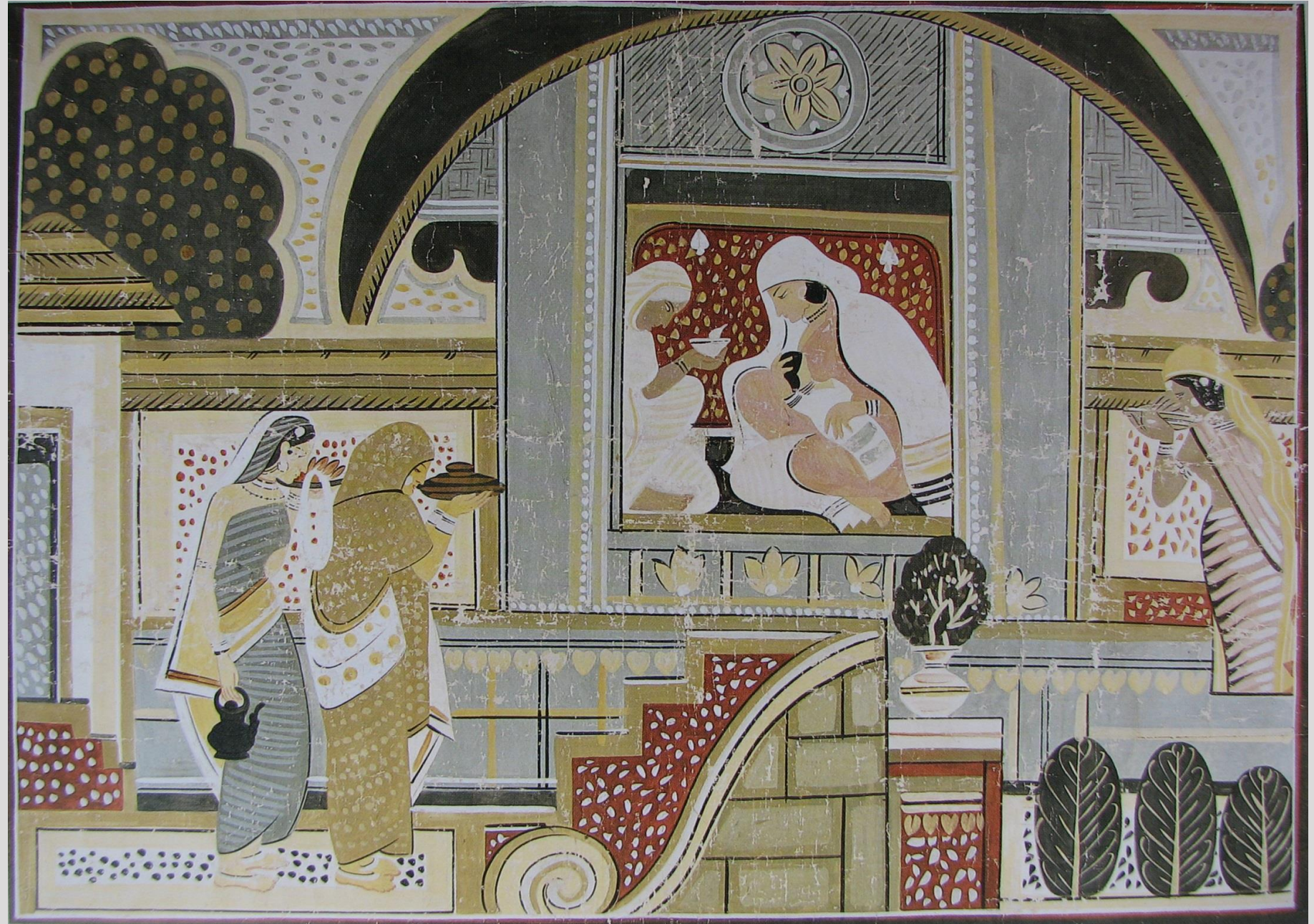
- 1918



Painted by Nandalal Bose



Halakarshana in Sriniketan,
1928

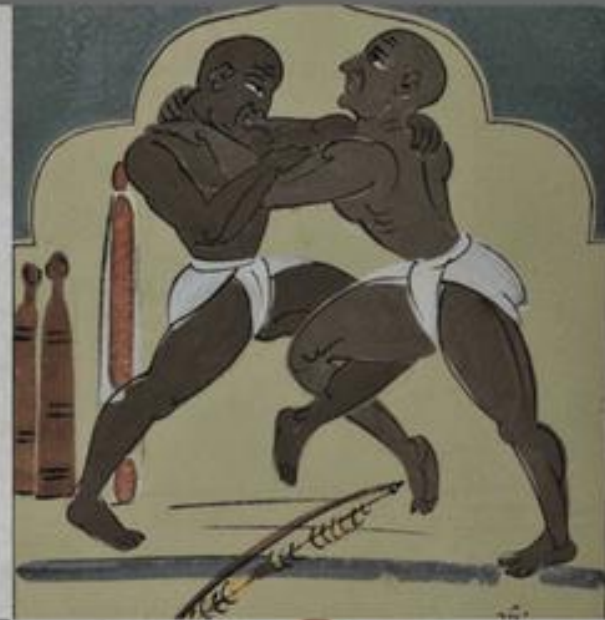


Nandalal Bose
Birth of Chaitanya



Kala Bhavana, Santiniketan, 1937





Haripura



Posters



Yokoyama Taikan and Nandalal Bose
1924



Nandalal Bose
Untitled
1929
Ink and wash on card
5 ³/₈ x 3 ³/₈ in



Nandalal Bose
hills with flying birds





Darjeeling and fog,1945.



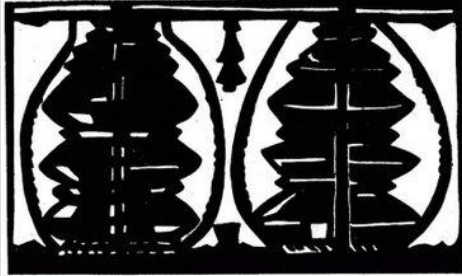
Alakananda



অ আ

ছোটো খোকা বলে অ আ
শেখে নি সে কথা কওয়া।

Page from Rabindranath Tagore's "Sahaj
Path/Pratham Bhag", illustrated by Nandalal Bose
in linocuts, Visva Bharati, 1401 Bangabda reprint



এ ঐ

বাটি হাতে এ ঐ
হাঁক দেয় দে দৈ।



ও ঔ

ডাক পাড়ে ও ঔ
ভাত আনো বড়ে বৌ।

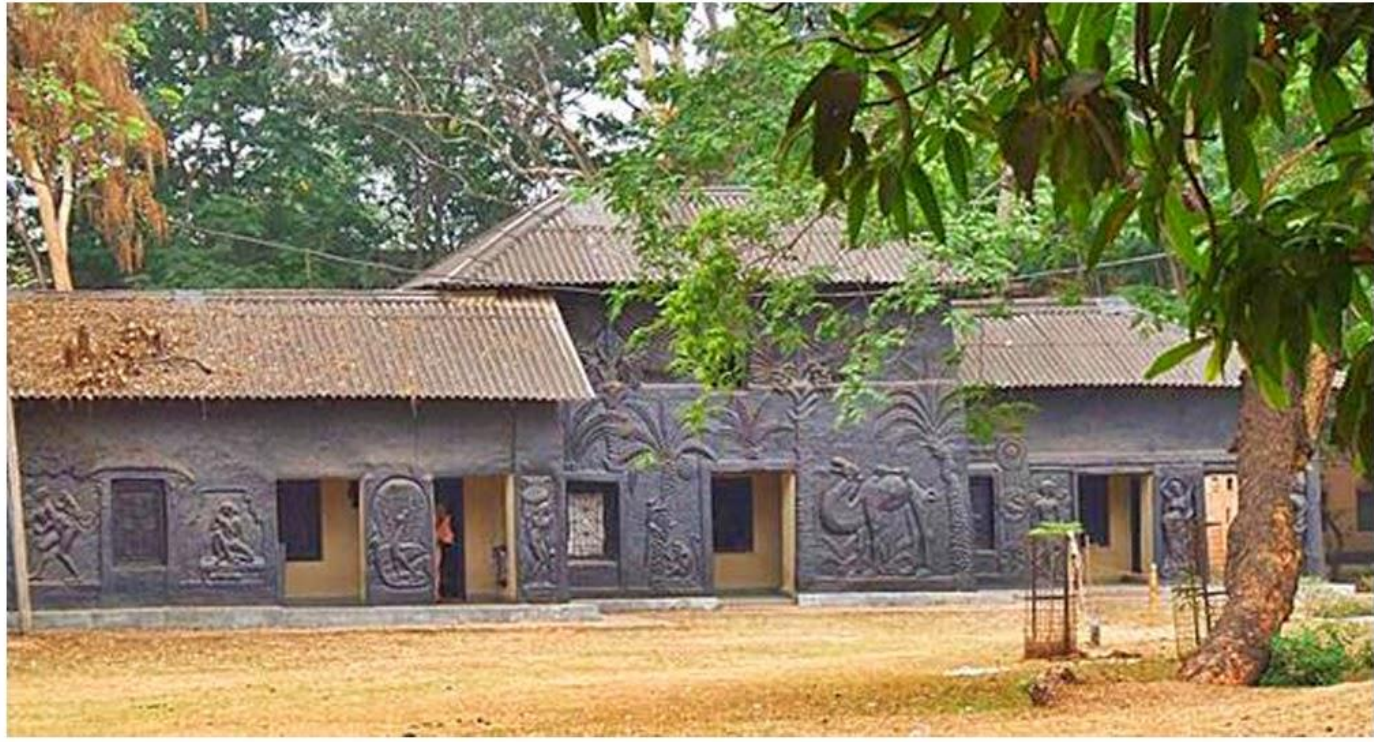


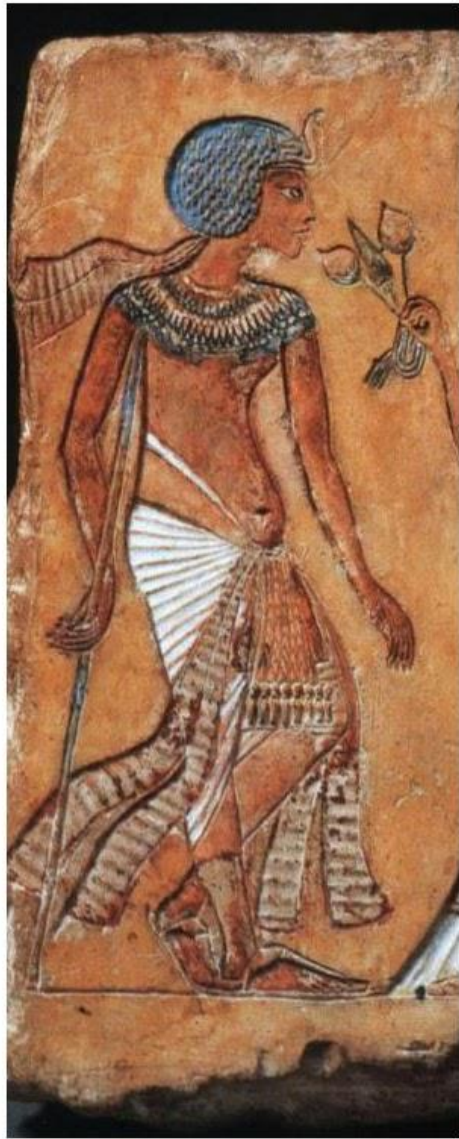


Natir Puja, 1942



Black House, Santiniketan







Benode Behari Mukharjee

'My objectives have always been around an artist's ultimates – have sought to know myself, and in the process unfold it to others, never forgetting that I am just one amongst the many.' from Chitrakar



He arrived in 1917 to take admission in the Brahmacharyashram School

Benodebehari started teaching at Kala Bhavana from 1925 and continued till 1948.

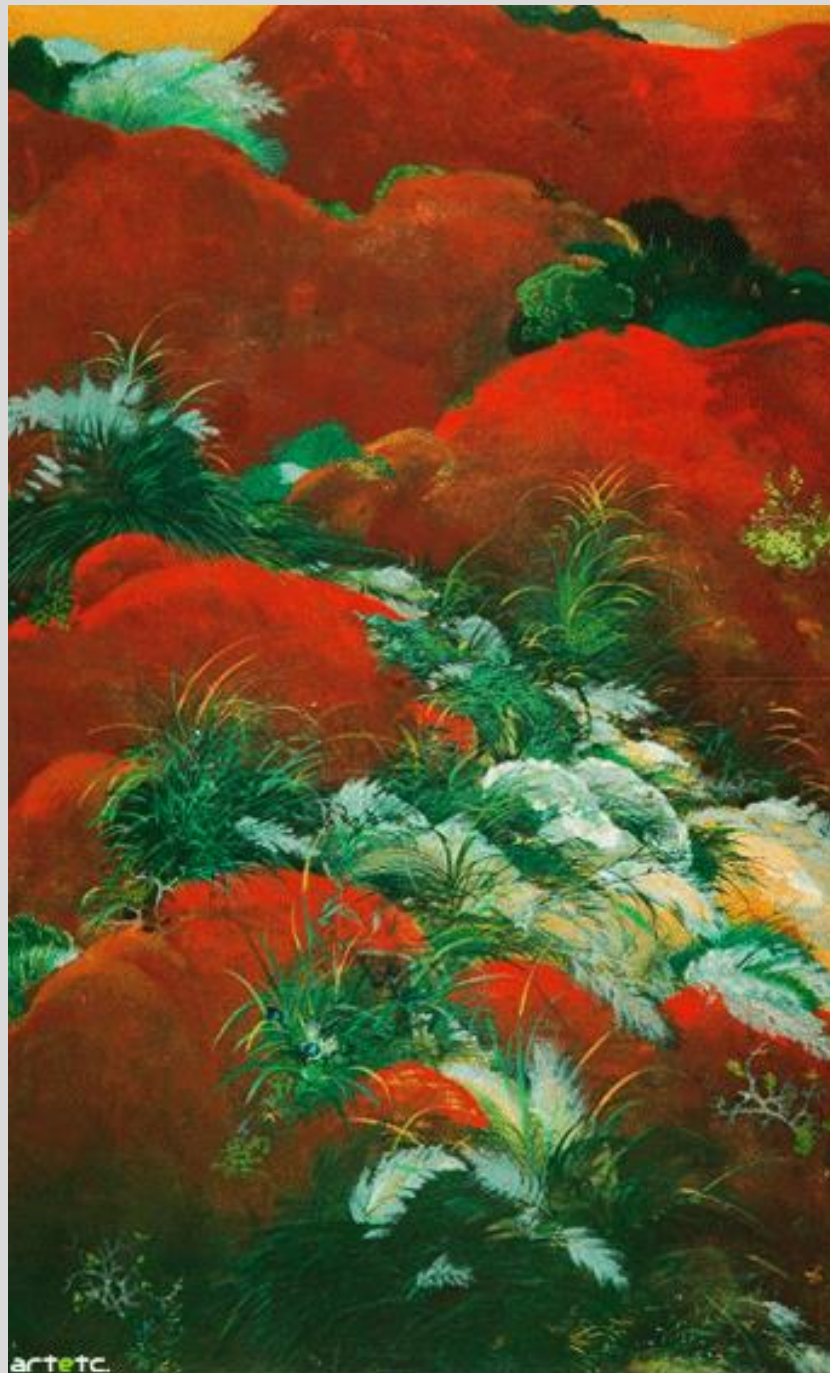


Benodebehan with Nandalal Bose and other early students of Kala Bhavan in Santiniketan in 1936,

Biribhum landscape
tempera on cloth
36.8 x 26.7 cm., early 1920s



Benode Behari Mukharjee
Laughter, Tempara, 1922-23



The Tree Lover
tempera on paper,
73.7 x 40 cm, 1932





The Bridge
tempera on cloth, 47.5 x 60 cm, 1932

Sar Grass
tempera on paper, 29.5 x 51 cm.,
1938





Picture Dealer's Shop in Japan
water colour on silk, 1937-38



Yukihiko Yasuda, Ryuzo Saito, Benodebehari Mukherjee, Kanpo Arai,



Seison Meda, Kanpo Ami, Benodebehari Mukherjee





Kala Bhavana dormitory ceiling mural





Cheena Bhavana mural
1942





Life of the Medieval Saints

Life of Medieval Saints, North wall, Hindi Bhavan, 1946-47



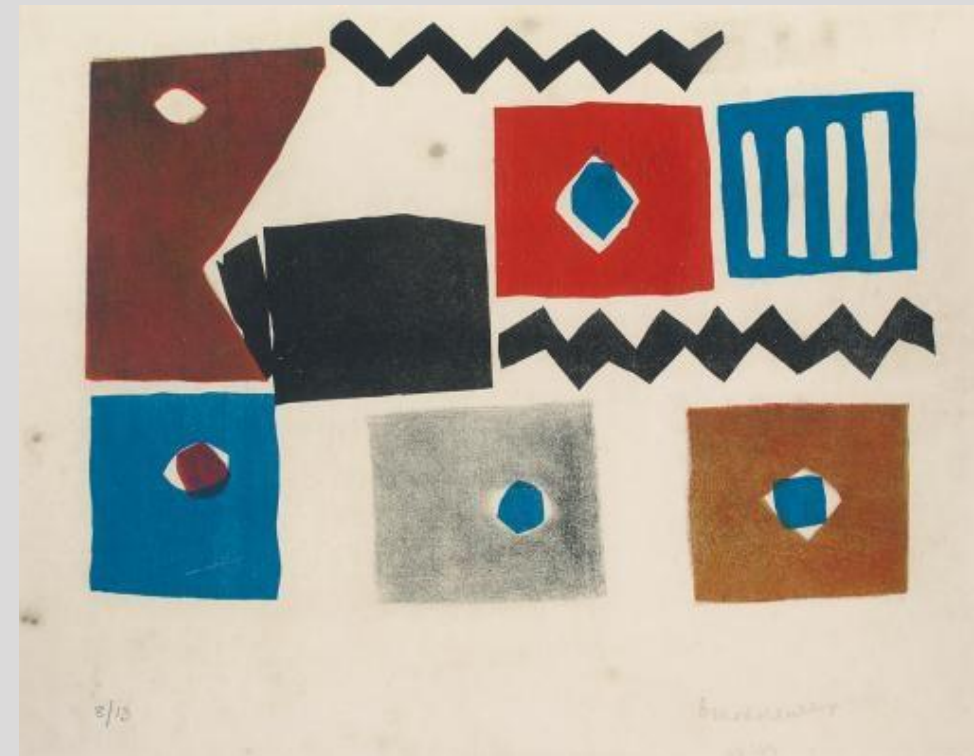








Benodebehari lost his eye sight completely after an eye operation in Delhi in 1956.





Ceramic tile mural on the wall of mural studio (1972) in Kala Bhavana.

Ramkinkar Baij

1906 in Bankura in West Bengal

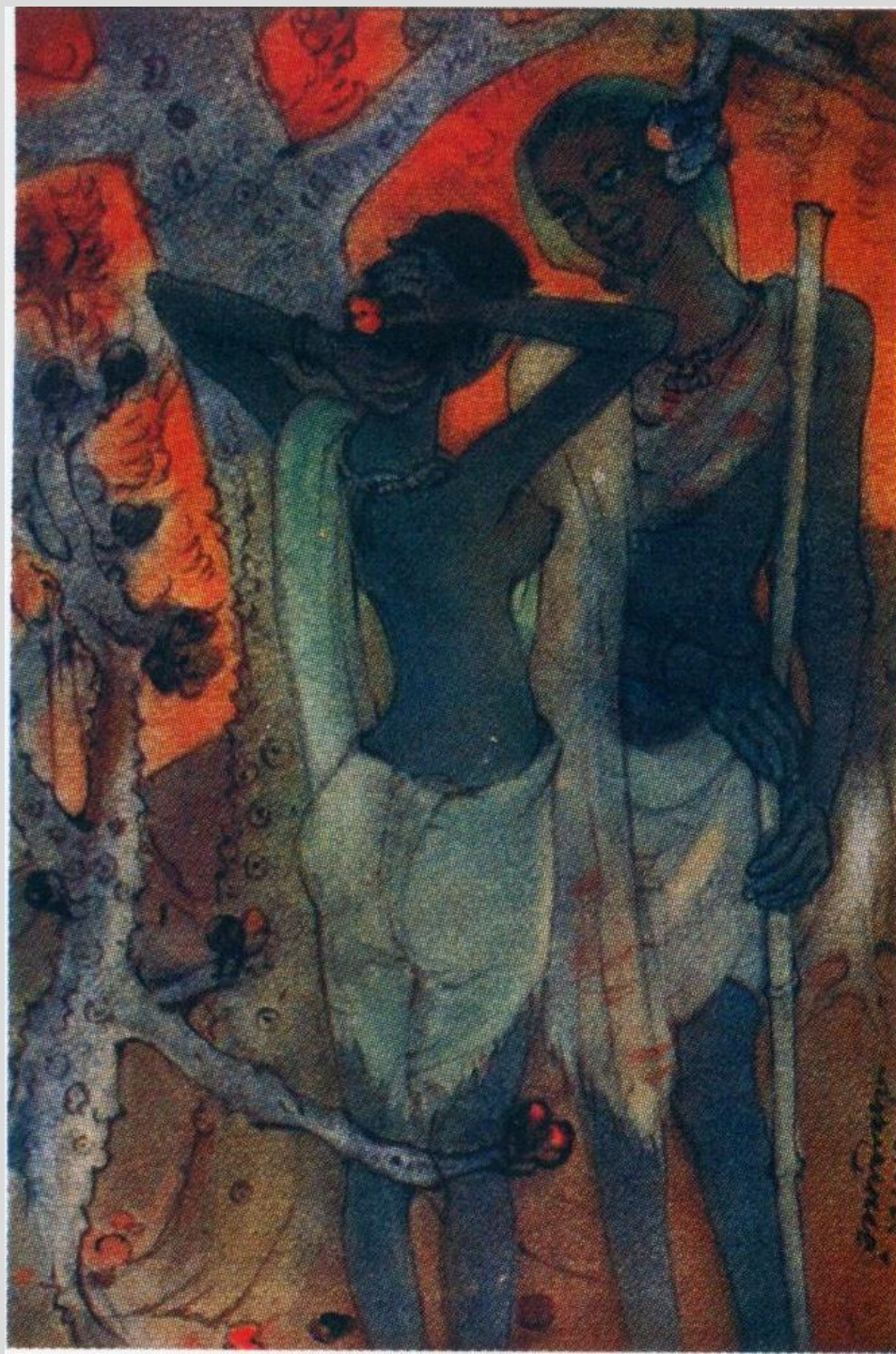
1925, on the advice of
Ramananda Chatterjee - way to
Kala Bhavana,



Untitled
(Portrait of Sampurna Baij,
Ramkinkar's Mother)
Undated
Watercolour on Paper



Reunion, Gitagovinda,
Watercolour,
Published in Prabashi
1920



Girl with a dog
Oil on Canvas



Untitled
Plaster cast
1930



Sujata, Direct Concrete
1935



Santhal Family
1938





Lamp Stand,
Direct concrete, 1940



Untitled
Cement
1943





The Oxbow Cave, 15,000 years old, showing a bison with a human figure on its back.

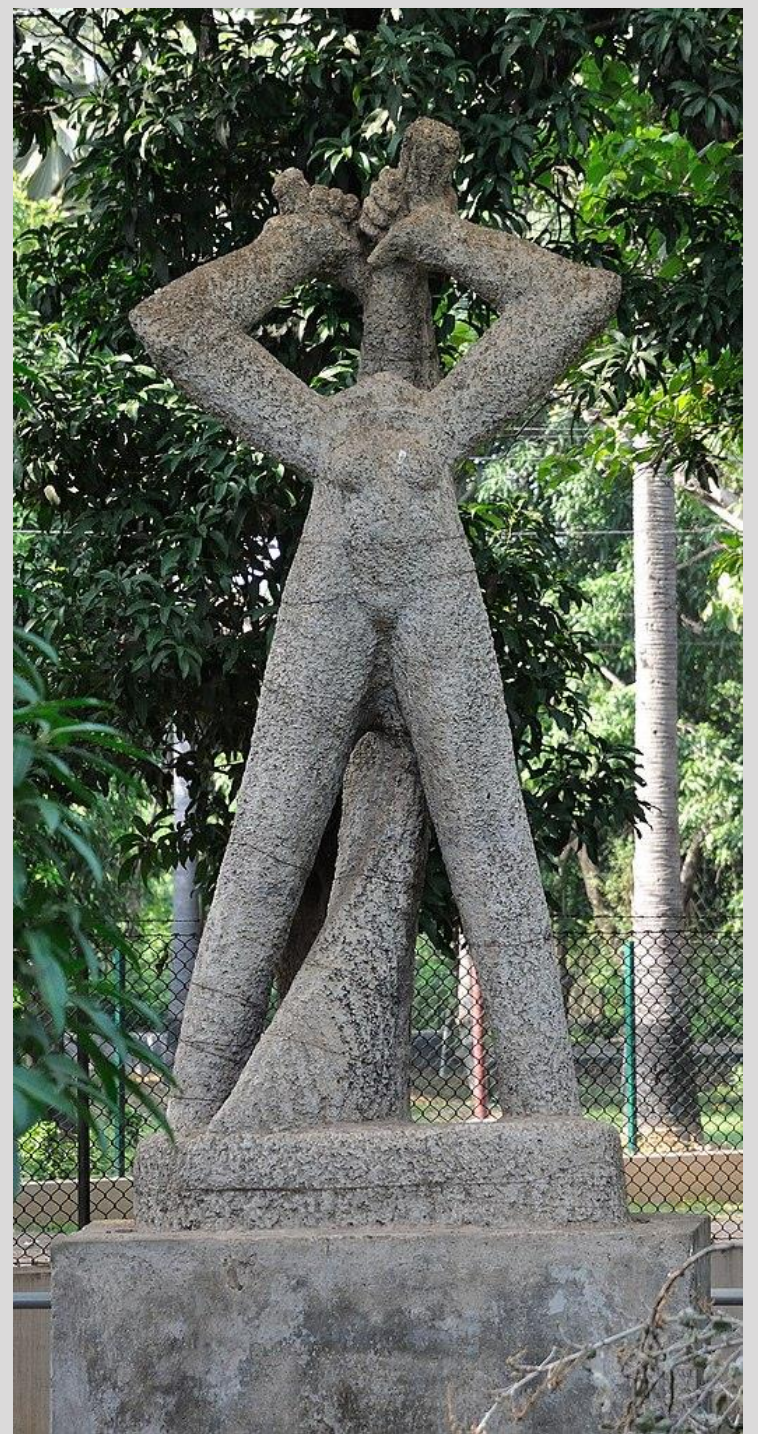
Rooster
Oil on jute
31.5 x 25 in.
1970



Cocks on the Table
Oil on board,
14 ¼ x 19 ⅛ in.



Tresher,
Direct Cement,
1943



Speed
Plaster
1953







Vera Mukhina, Worker and Kolkhoz Woman, made for the 1937 World's Fair in Paris, and subsequently moved to Moscow.



