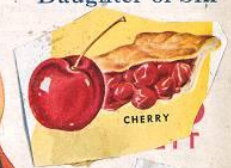


# Pop Art

# Intimate CONFESSIONS



I was a Rich  
Man's Plaything  
Ex-Mistress  
I Confess  
If this be Sin  
Woman of the  
Streets  
Daughter of Sin



**Eduardo Paolozzi**

I Was a Rich Man's Plaything  
1947

Sir Eduardo Paolozzi  
Meet the People  
1948



Eduardo Paolozzi  
Evadne in Green Dimension  
1972 (published)



Eduardo Paolozzi  
Bunk  
1972  
lithograph  
Sheet size: 42 x 29 cm



PART III • COLOR



Richard Hamilton  
Just What Is It That Makes  
Today's Homes So  
Different, So Appealing?  
1956



CPS/DP

Richard Hamilton

Richard Hamilton

Just what is it that makes today's homes so different?

1992



*Printed post 1/5 R.Ham/65*

Richard Hamilton  
My Marilyn  
1965





Richard Hamilton, Installation shot from the exhibition This Is Tomorrow, Tate Modern, 13 February – 26 May 2014.

# Roy Lichtenstein





Roy Lichtenstein  
Baked Potato  
(1962)  
Ink and synthetic polymer paint on paper



Roy Lichtenstein  
Girl with Ball  
1961

I PRESSED THE FIRE CONTROL... AND AHEAD OF ME ROCKETS BLAZED THROUGH THE SKY...



Whaam! 1963  
Roy Lichtenstein



Roy Lichtenstein.  
Drowning Girl.  
1963  
Oil and synthetic polymer  
paint on canvas  
171.6 x 169.5 cm



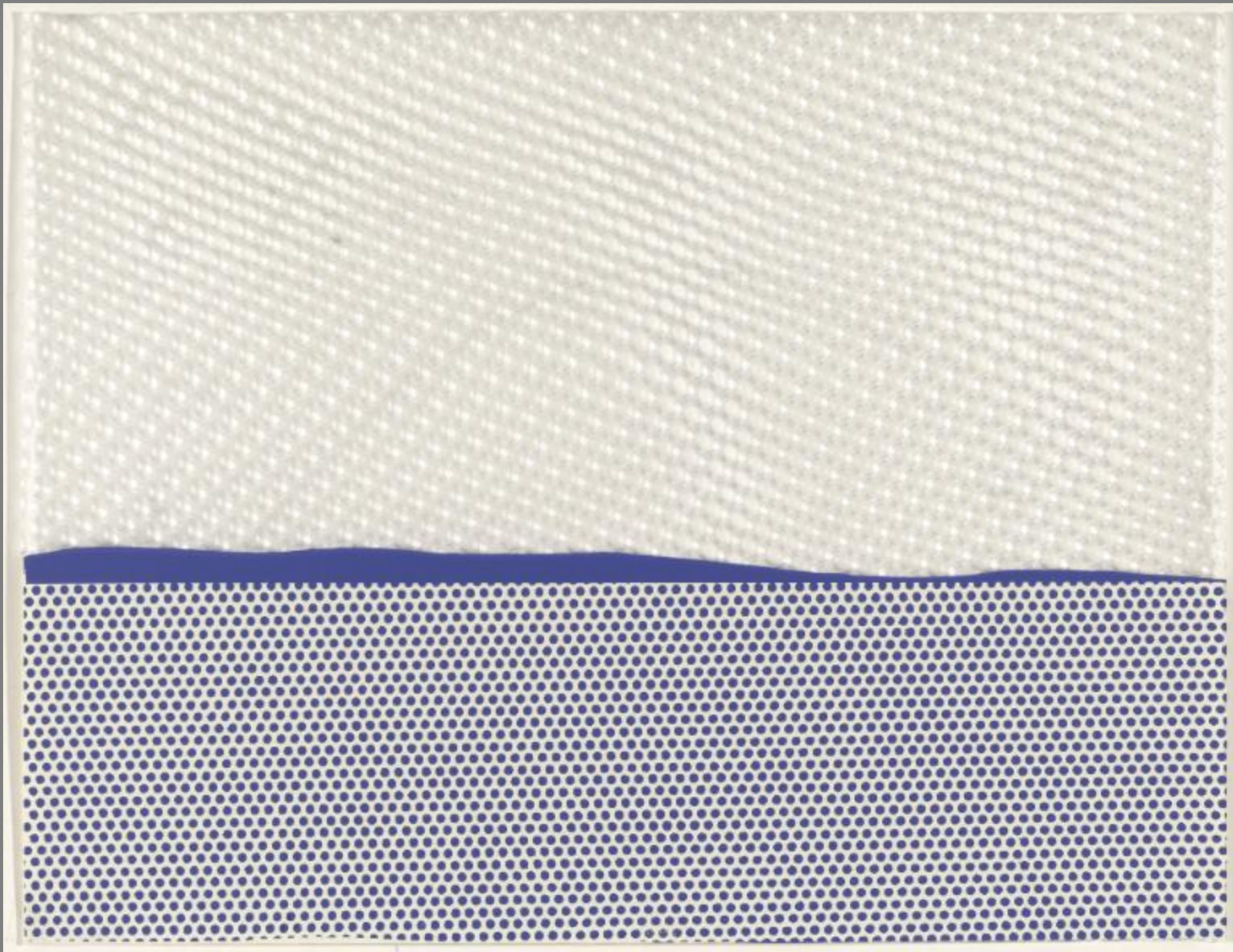
# ON TO POP



In 1965, Lichtenstein's 'Big Mouth' explored the theme of the mouth, a symbol of communication and expression. The work is a vibrant, abstract composition of bold colors and thick, expressive brushstrokes. It challenges the viewer to see the face in the abstract forms, a hallmark of Lichtenstein's pop art style. The work is a testament to his mastery of color and his ability to create a sense of depth and movement in a two-dimensional space.



Roy Lichtenstein  
Brushstroke  
1965  
Screenprint  
58.4 × 73.6 cm



Roy Lichtenstein

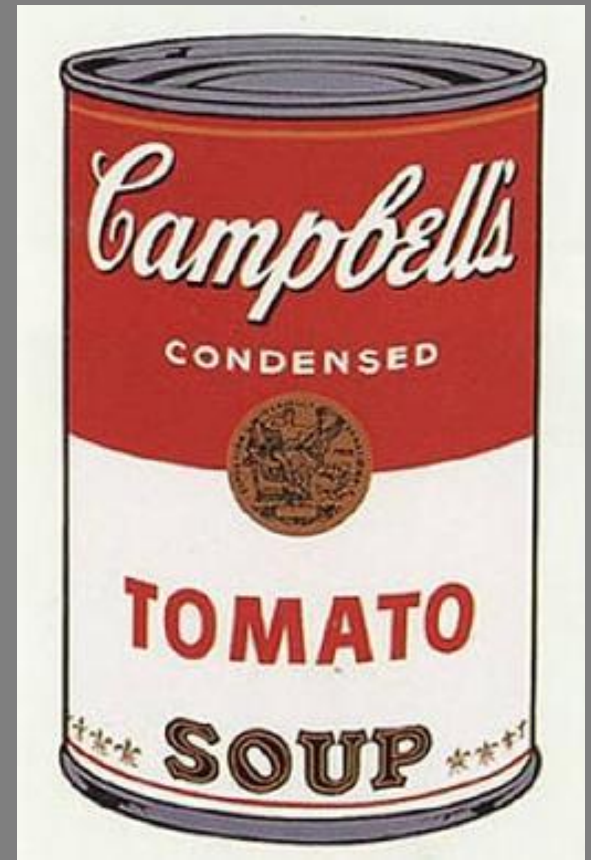
Seascape I from New York Ten

1964, published 1965, 43 x 55.6 cm, Screenprint on laminated plastic from a portfolio with seven screenprints, one etching, one lithograph, and one embossing





32 Campbell's Soup Cans 1962



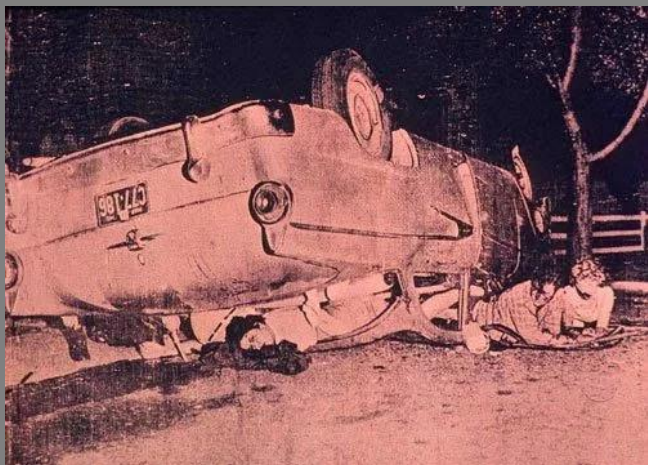
Campbell's Soup I (1968)



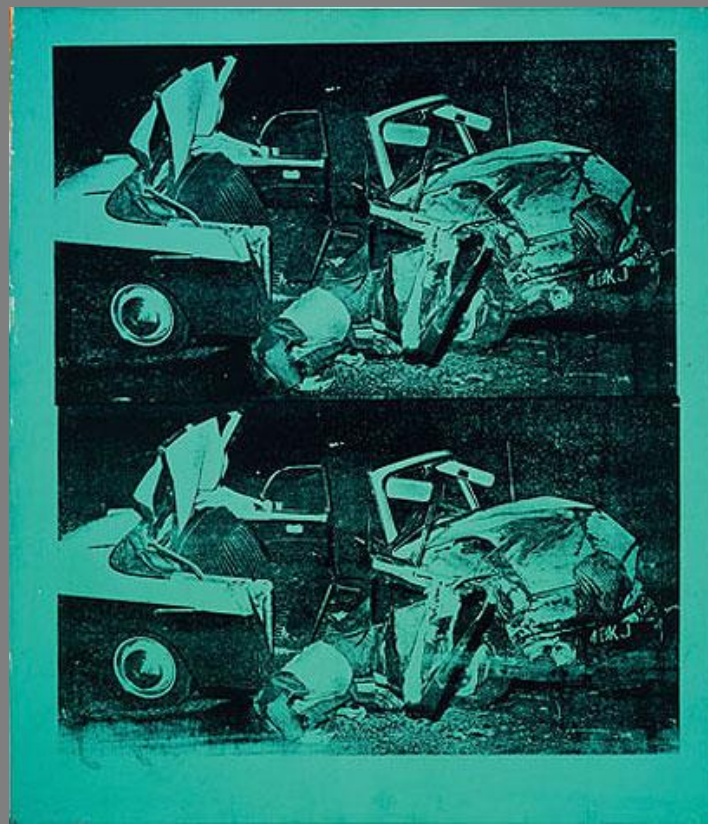
*The Death and Disaster Series*

Andy Warhol Orange Car Crash Fourteen Times 1963  
Orange Car Crash (5 Deaths 11 Times in Orange) (Orange Disaster)



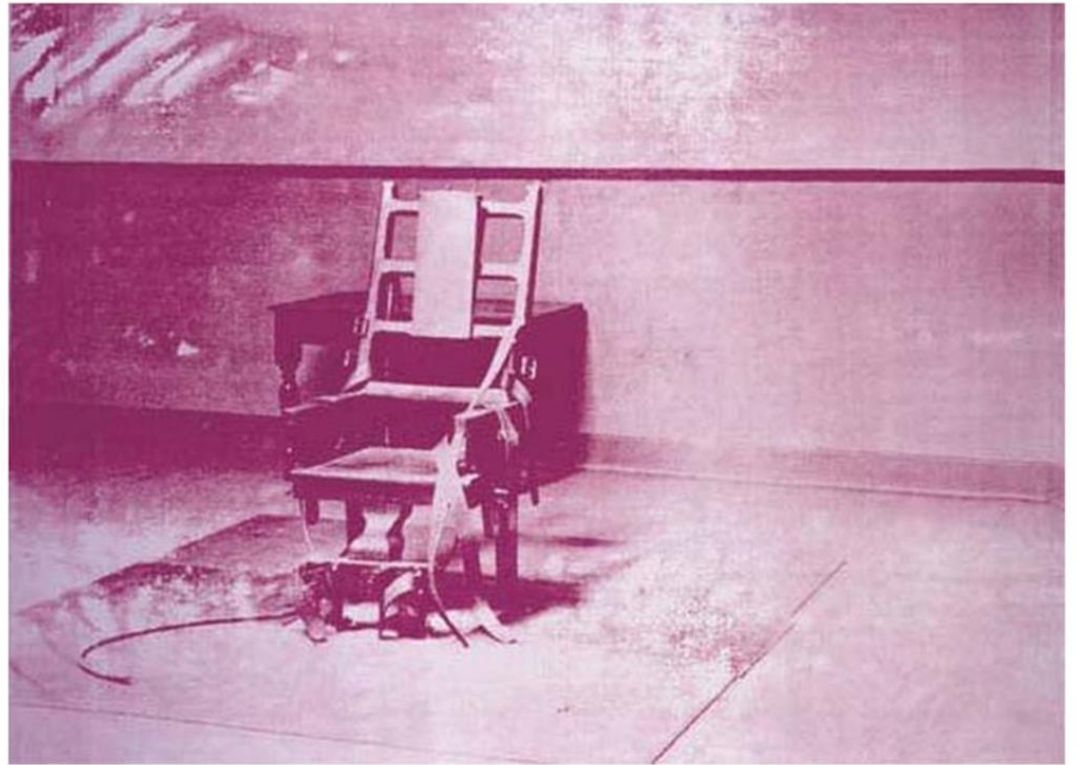


5 deaths twice 1 (red car crash) by andy warhol





Green Car Crash from, 1963



Electric Chair, 1963





ANDY WARHOL

MAO (set of 10)

1972

Screenprints on Beckett High White Paper

36 X 36in

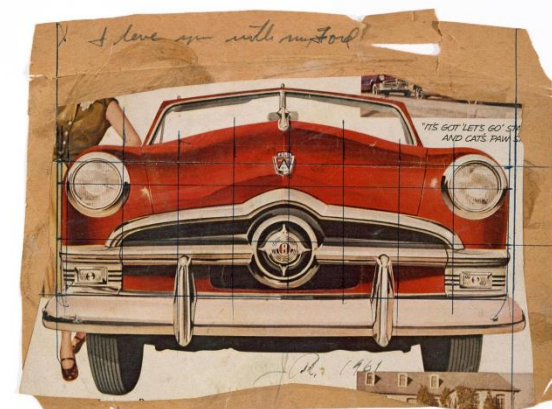


Andy Warhol Flowers Full Suite is based off a photograph by Patricia Caulfield





James Rosenquist,  
I Love You with My Ford,  
1961



Advertisement for Ford in Life-Magazine. 24. April 1950, S. 8.  
Advertisement for Veto in Life-Magazine, 14. January 1957, S. 3.  
Advertisement for Franco-American Spaghetti in Life-Magazine,  
6. December 1954, S. 208



James Rosenquist  
President Elect, 1960-61/1964  
Oil on Masonite  
228 x 365.8 cm



Collage for President Elect, 1960-61. Cropped poster, magazine clippings, and mixed media, 14 1/2 x 23 13/16 inches.

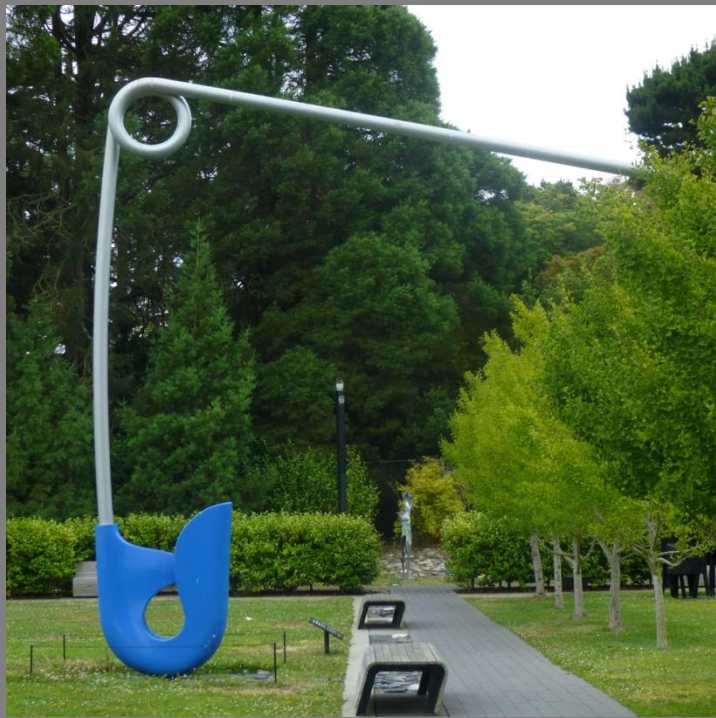


James Rosenquist, Installation view of F-111 in the Leo Castelli Gallery, 1965.



Claes Oldenburg





Corridor Pin

Claes Oldenburg, Clothespin, 1976.







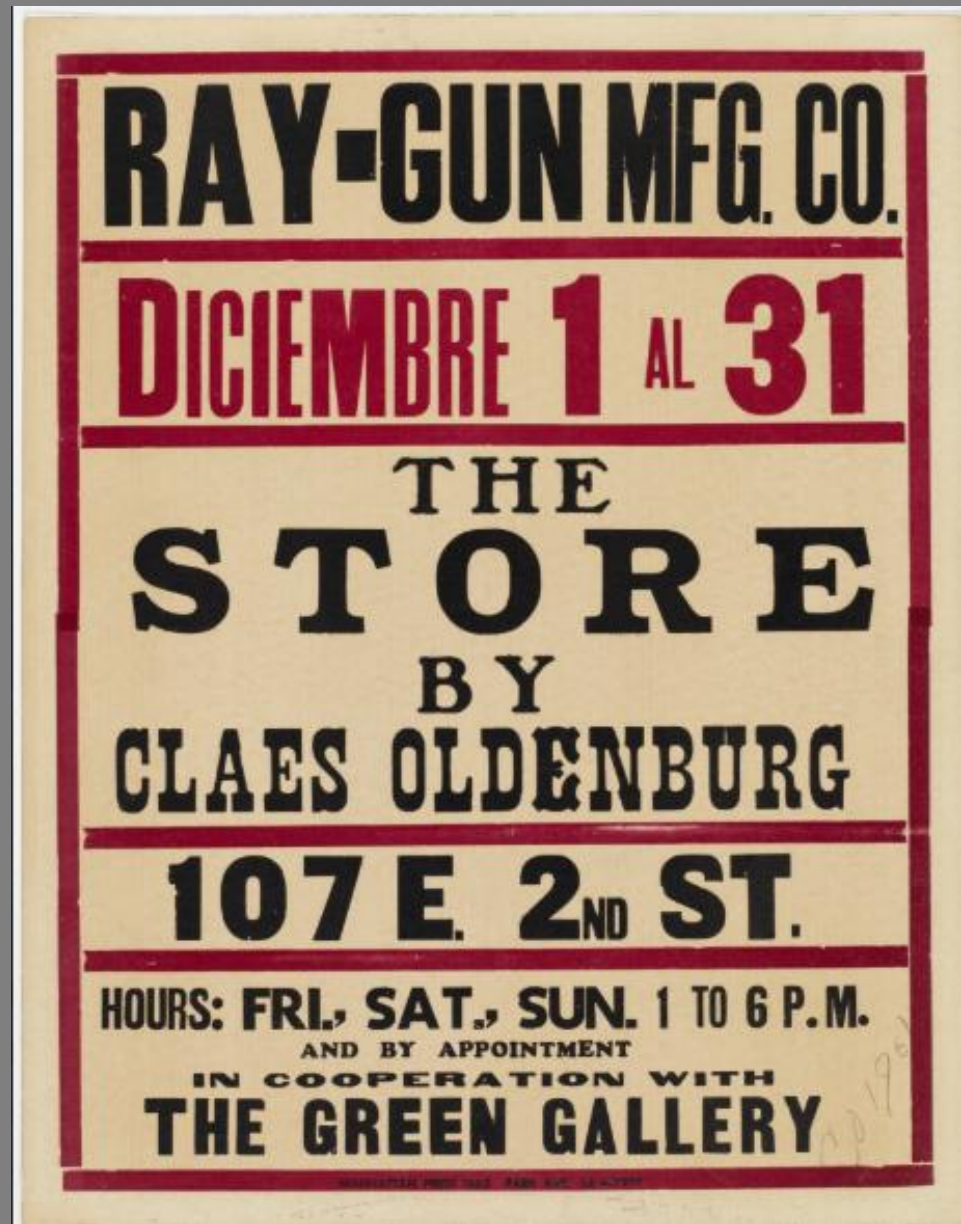
© WahooArt.com

Apple core by Claes Oldenburg



In the winter of 1961, Oldenburg circumvented the practice of selling art through a gallery by opening a storefront on the Lower East Side of Manhattan and selling his work there. Among the unorthodox, eclectic offerings were sculptures of undergarments and slices of blueberry pie and other pastries made out of painted plaster. To advertise this bold endeavor, Oldenburg created business cards and stationery as well as posters such as the one on view here.

Claes Oldenburg  
The Store  
1961





The Store (1961)



Claes Oldenburg, Store, 1962, mixed media installation at the Dallas Museum for Contemporary Arts ..



Artwork Still Life #30 by Tom Wesselmann



Still life #12, 1962  
Tom Wesselmann













Great American Nude No. 44





American Nude  
oil and collage on canvas

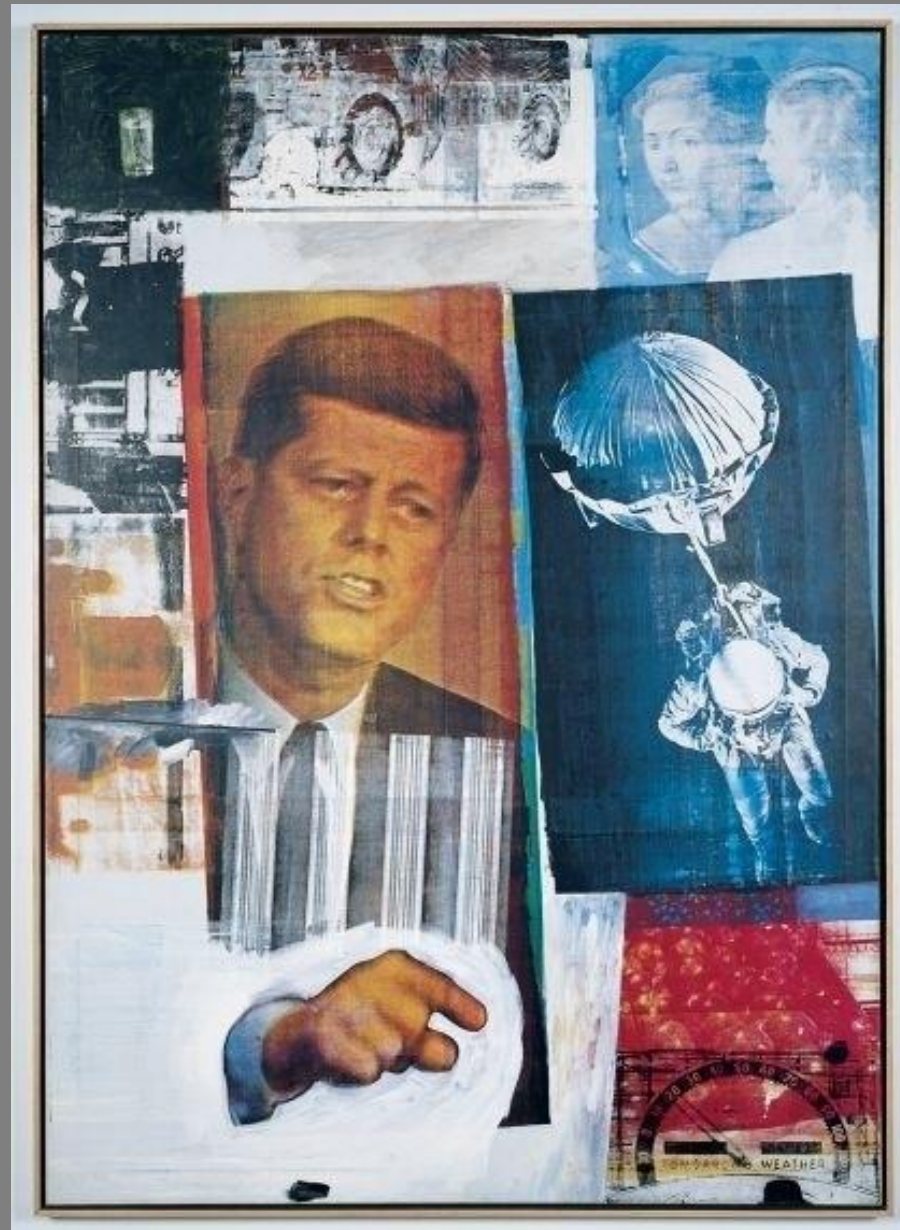




K. Sark



Robert Rauschenberg,  
"Retroactive", 1964



Robert Rauschenberg  
Retroactive II  
1964



Robert Rauschenberg

1954/1955;

oil, paper, fabric, wood, and metal on canvas, 203.2 x 243.84 x 8.89 cm





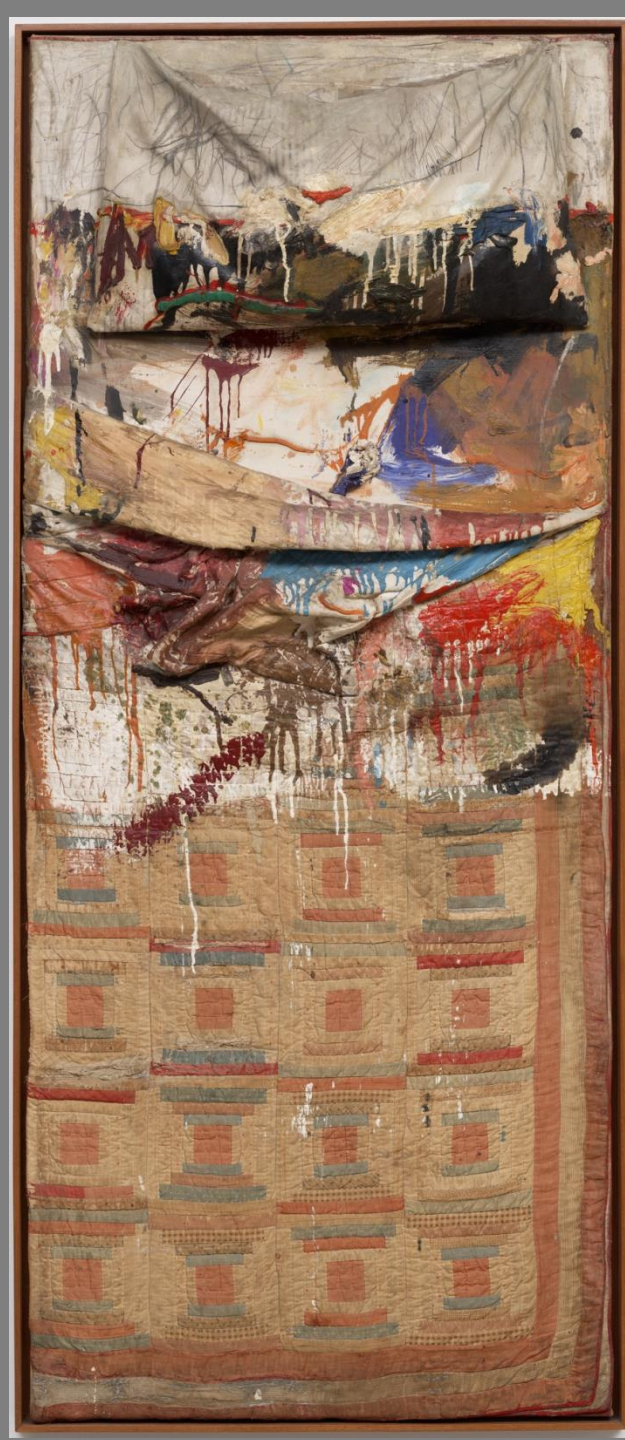
Robert Rauschenberg

Bed

1955

Combine painting: oil and pencil on pillow,  
quilt and sheet on wood supports.

191 x 80 x 20.3 cm



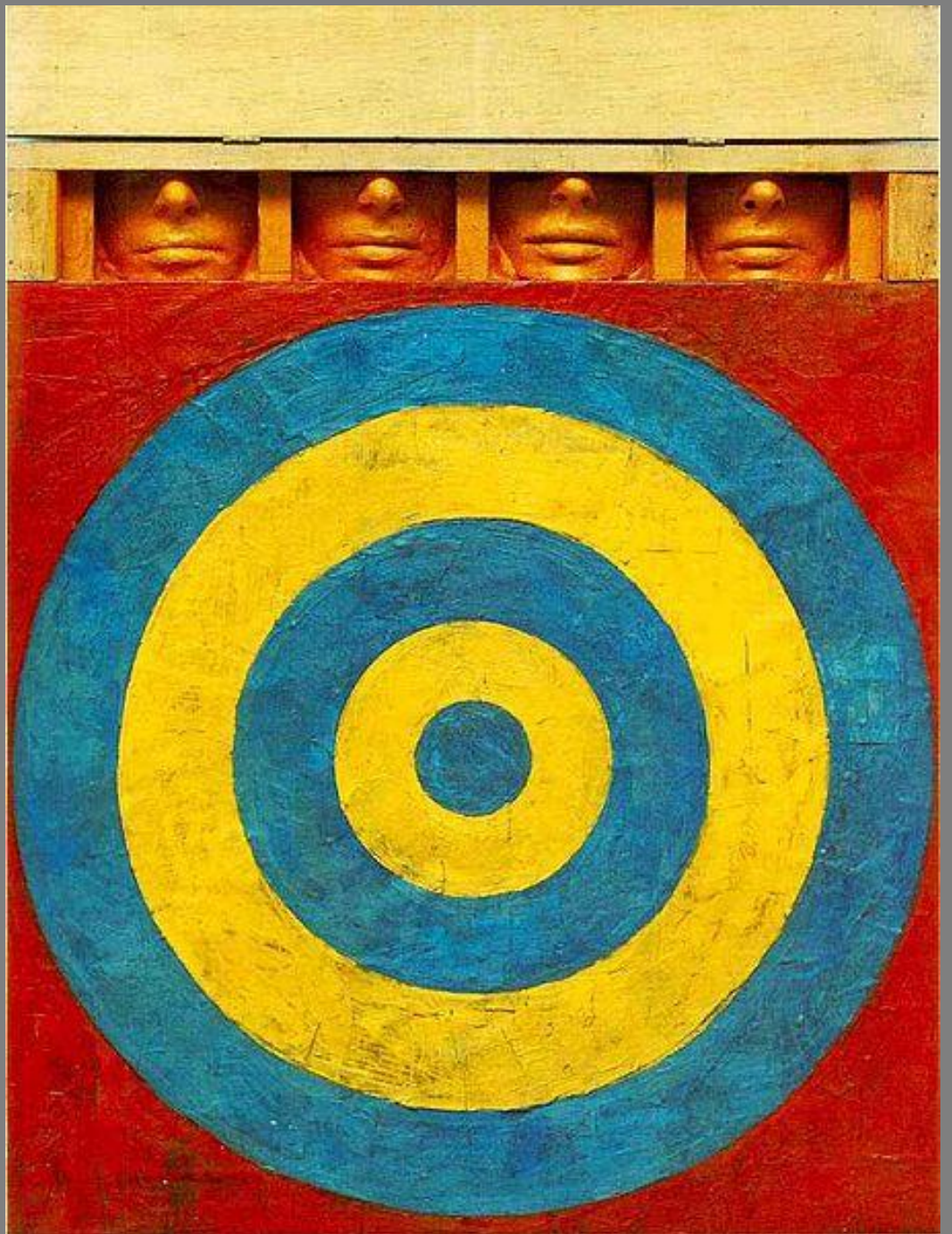


Robert Rauschenberg

1959

Oil, pencil, paper, metal, photograph, fabric, wood, canvas, buttons, mirror, taxidermied eagle, cardboard, pillow, paint tube and other materials

Jasper Johns  
1955





Jasper Johns, "Flag", 1954/55, MoMA,





Jasper Johns, Fool's House  
1962. Oil on canvas with broom, sculptural  
towel, stretcher and cup. 182.9 x 11.4 cm.



Jasper Johns, Land's End, 1963



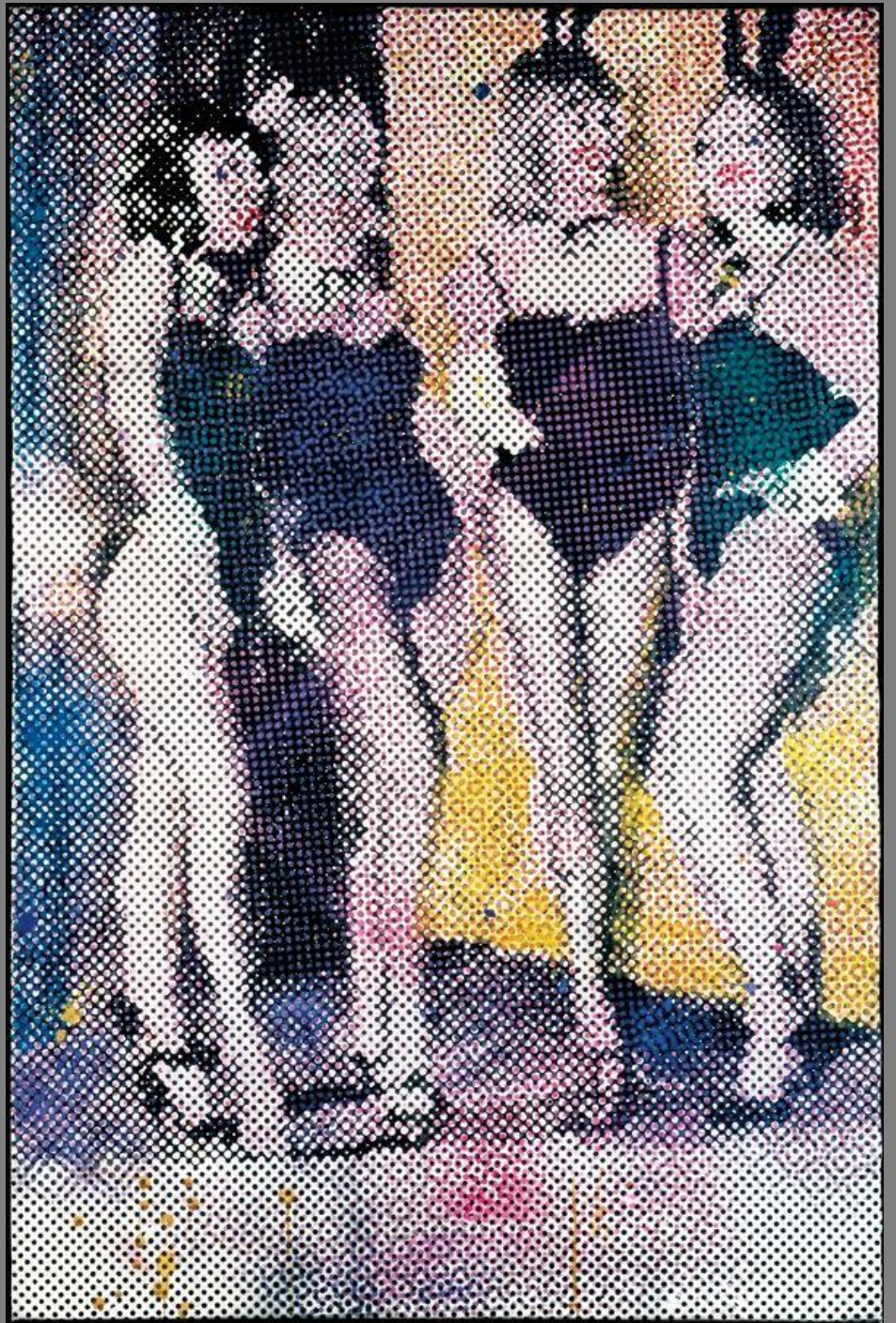
**Sigmar Polke**

Chocolate Painting,  
1964

Enamel on canvas

35 7/16 x 39 3/8 inches





Sigmar Polke  
Bunnies  
1966  
Oil on canvas



Sigmar Polke,  
Freundinnen II, 1967

**Sigmar Polke**  
Woman exchanged

